



4.3.1 Institution frequently updates its IT facilities including Wi-Fi

Descriptions on IT facilities

The IT facilities available in our college can be summarized as follows,

LAN Facility

There are 35 data network switches (Gigabyte), 18 POE network switches for access points, CCTV cameras. 350Mbps of internet connectivity is shared across the campus, where 350Mbps is shared for the students.

Server Configurations in Data Center

There are 02 servers with Xeon E-5 version-2, 16 GB RAM, 1.0 TB hard drive, which are served as Domain Controller (DC), Additional Domain Controller and Backup device - 5TB for NPTEL Videos in Digital Library server backup.

Workstation

580 desktops are provided to all department labs with configurations of Pentium dual core i3, i5 3 to 11th generation with 2GB, 4GB, 8GB and 16GB, 500GB hard disk with LAN connectivity. 36 desktops with configurations of core i3 4GB, 500GB and dual core 250GB, 2GB hard disks are available to carry out academic and administrative work.

Software's

Windows 2008 server and Windows 2007-2011 multi point server available. We also use open source operating systems such as Fedora, Ubuntu, Sophisticated software like MATLAB, ANSYS, XILINX, MULTISIM, MAST, MASM, CC STUDIO, KIEL, MICROWIND, KICAD, EXPRESS PCB, TURBOC++, JDK8, STAR UML PYTHON, ANAKONDA, WIRESHARK, WEKA, PUTTY, MYSQL, DEV-C++, Auto CAD etc are available.

Printers

24 Laser jet printers, 2 Color Printers 3 Xerox centers and 5 scanners are provided across the campus for academic and administrative purposes.

Updates and up gradation

Updates are maintained regularly through WSUS (Windows Server Update Service) and antiviruses are updated through cloud portal. Ram has upgraded in 56 computers in 1GB to 2 GB.

Wi-Fi

10 Extendable Wi-Fi access points are placed in various places like Library, Corridors, Labs, Hostels, Canteen and Outdoor. Wi-Fi access is provided to all the students which is monitored and controlled by linux server at the IT department for secure content access. All access points are routed to a Wi-Fi controller in the Data Center where configuration and updates are maintained in a centralized fashion.

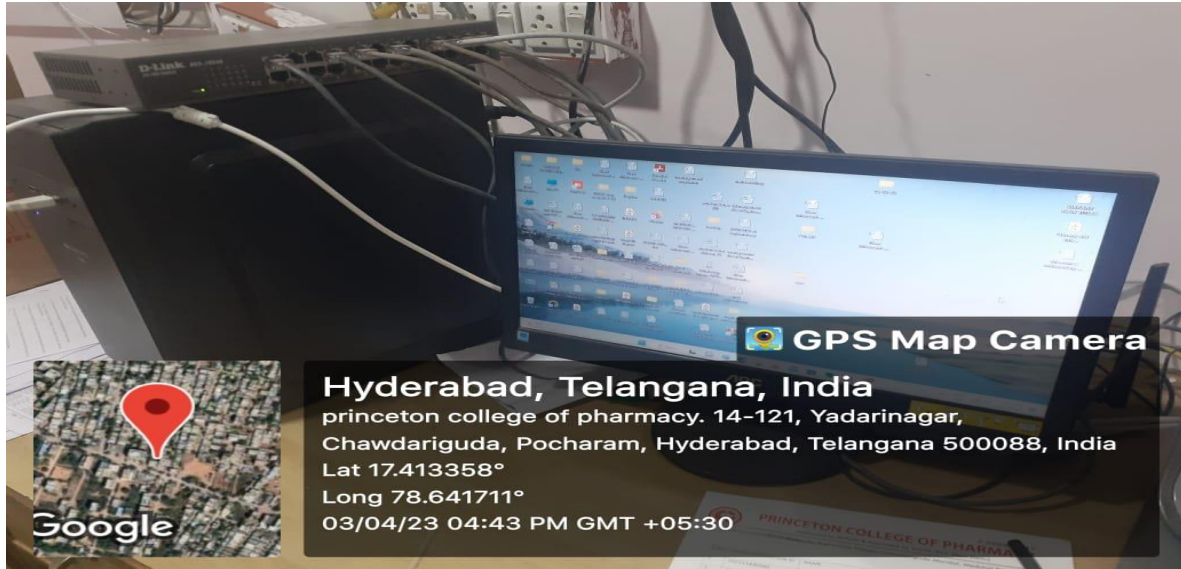
Bandwidth of the Internet Connection in the Institution

In the last academic year 2021-22 the Institution has provided 350 Mbps lines for Wi-Fi and LAN access, the administration implemented a strategy of offering Wi-Fi to the whole campus through 10 access points, which would be continuously updated in line with technical improvements.



LAN Facility

Data Network Switches

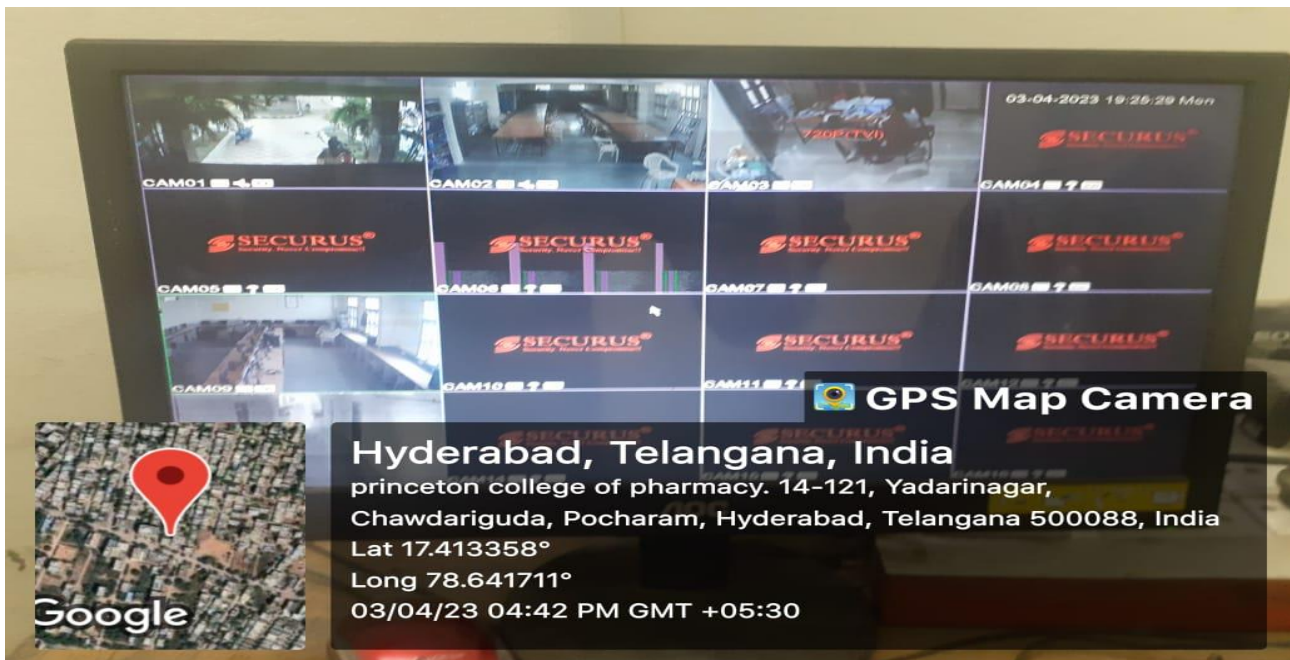


POE Network Switches





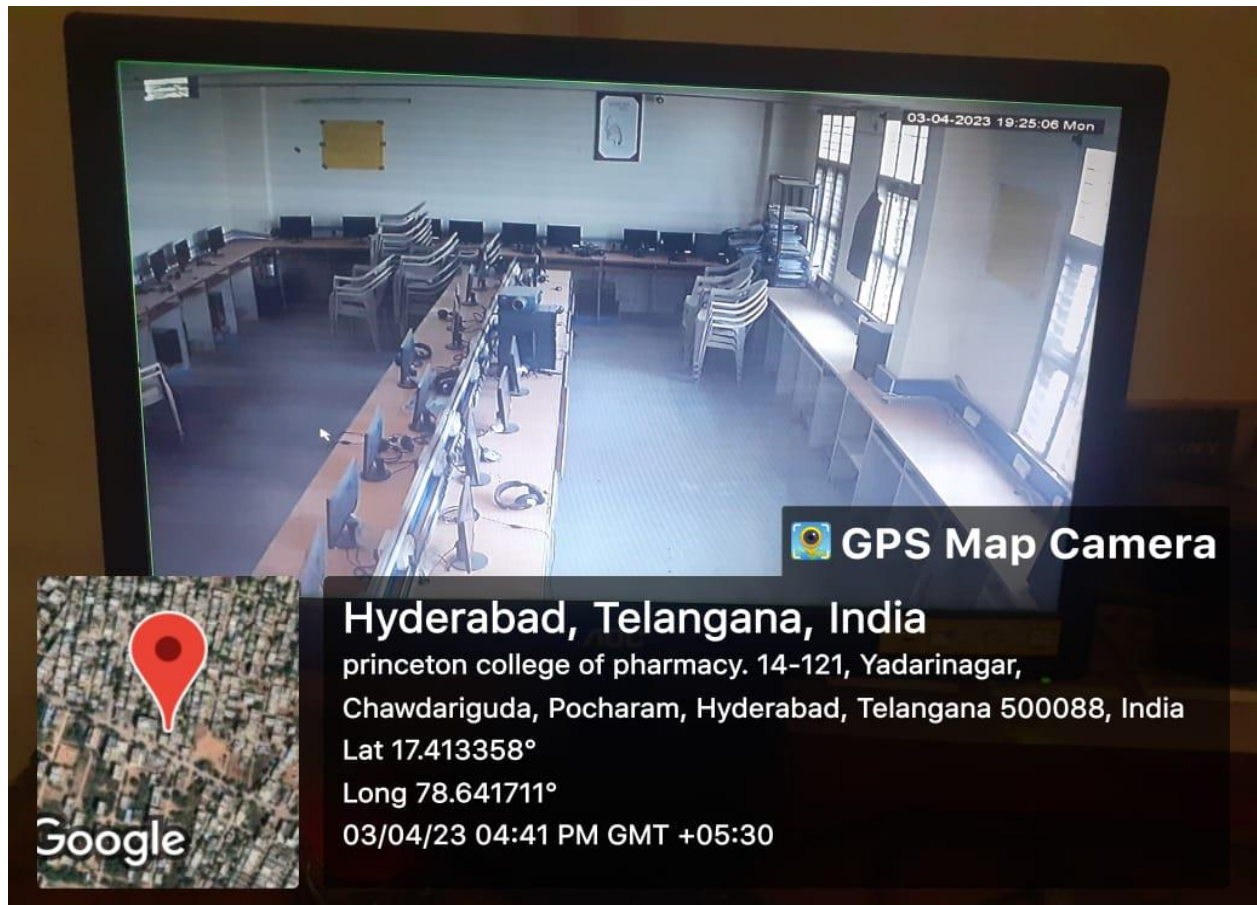
CCTV Cameras





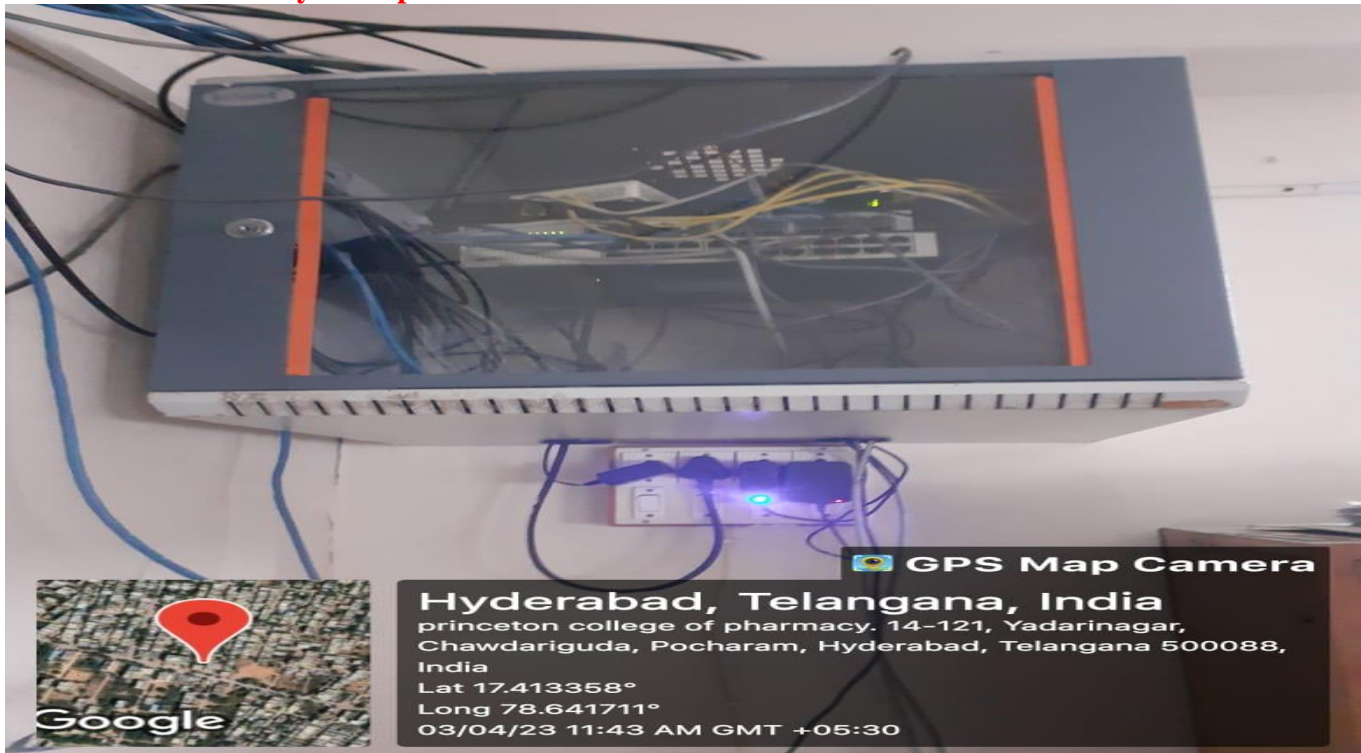
PRINCETON COLLEGE OF PHARMACY
(Affiliated to JNTUH, Hyderabad & Approved by PCI & AICTE, New Delhi)
Vijayapuri colony Chowdaryguda (V), Ghatkesar (M), Medchal (D), TS-500088.

Class Room CCTV Capture





Internet Connectivity and Speed



Internet Speed Test





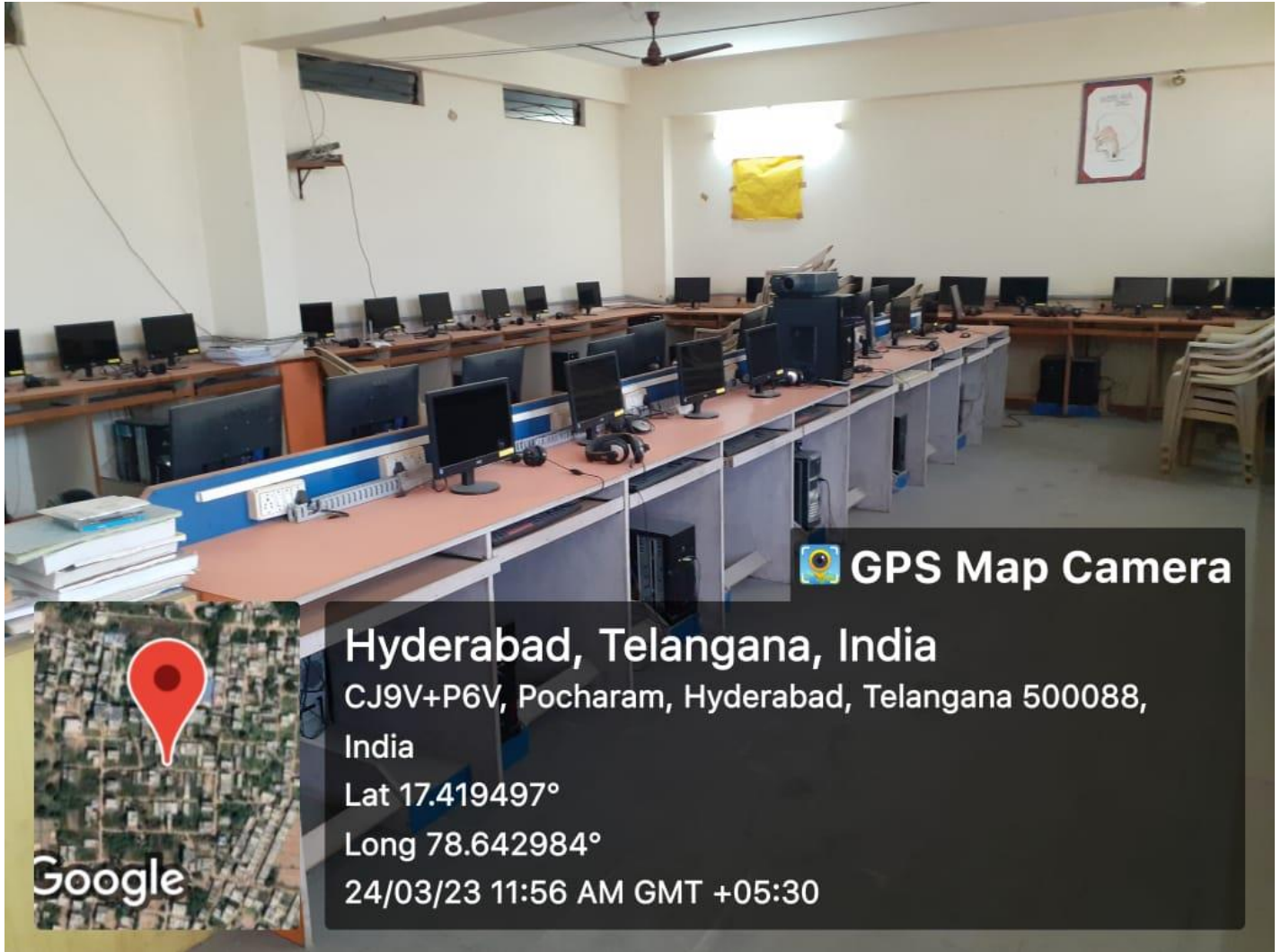
Xerox Machine & Printer





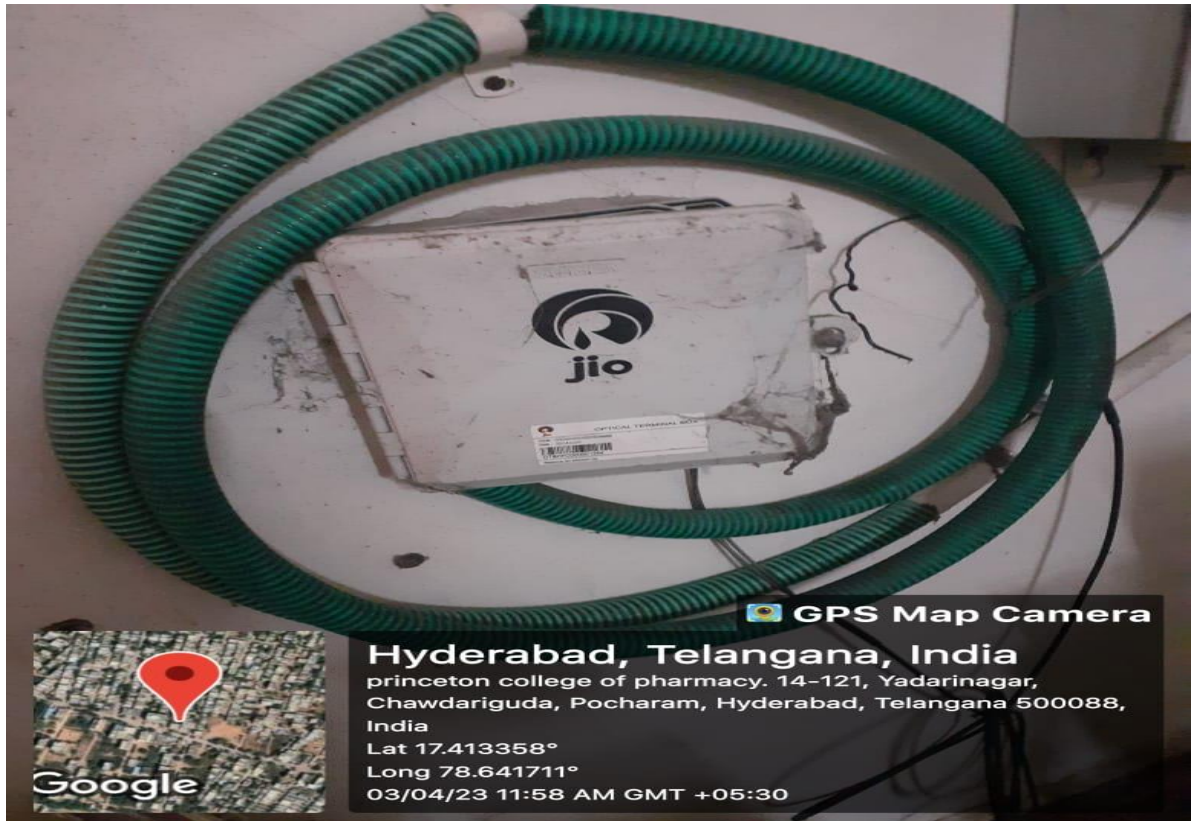
PRINCETON COLLEGE OF PHARMACY
(Affiliated to JNTUH, Hyderabad & Approved by PCI & AICTE, New Delhi)
Vijayapuri colony Chowdaryguda (V), Ghatkesar (M), Medchal (D), TS-500088.

Work Station





Internet Service Provider –Jio





ISP Point





Wifi Access Distribution Switch





Online UPS 5 KVA

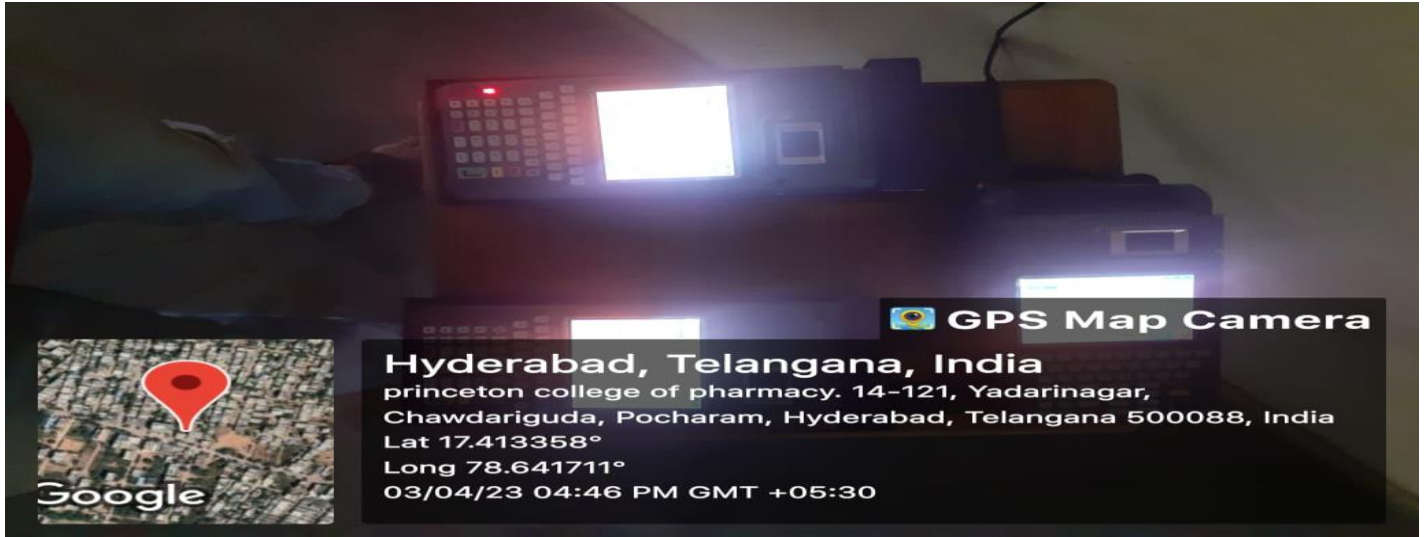


Batteries

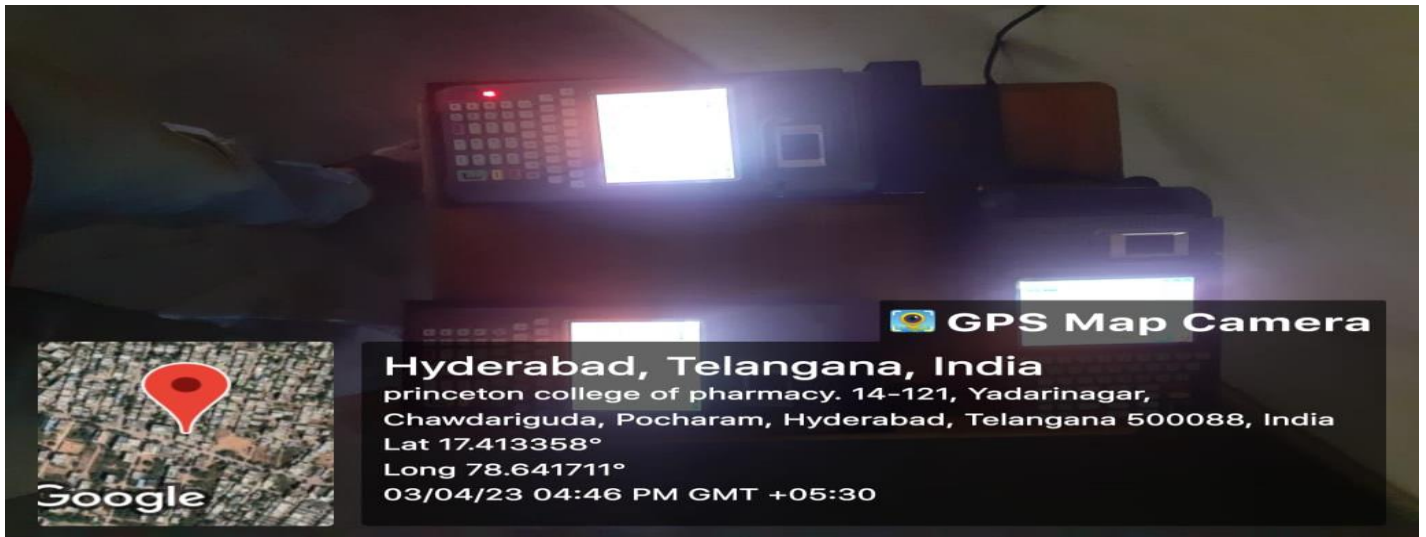




Staff Biometric Device



Student Biometric Device





PRINCETON COLLEGE OF PHARMACY
(Affiliated to JNTUH, Hyderabad & Approved by PCI & AICTE, New Delhi)
Vijayapuri colony Chowdaryguda (V), Ghatkesar (M), Medchal (D), TS-500088.

CLASS ROOM WITH STATE-OF-THE-ART ICT FACILITIES



 **GPS Map Camera**

Hyderabad, Telangana, India

princeton college of pharmacy. 14-121, Yadarinagar,
Chawdariguda, Pocharam, Hyderabad, Telangana 500088, India

Lat 17.413358°

Long 78.641711°

27/03/23 03:19 PM GMT +05:30




PRINCIPAL

Princeton College of Pharmacy,
Korremula Vill, Vijayapuri Colony,
Ghatkesar Mdl, Medchal Dist, Telangana.

PRINCIPAL